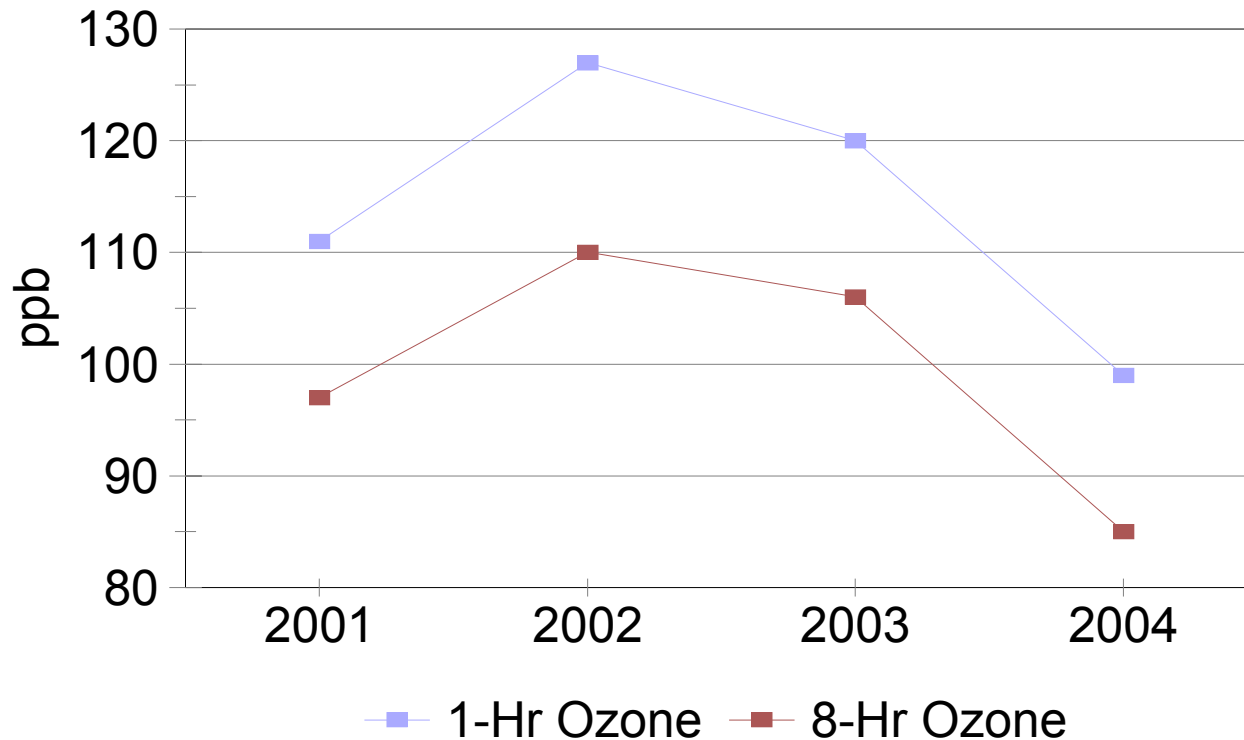


Air Quality Trends SW Ohio

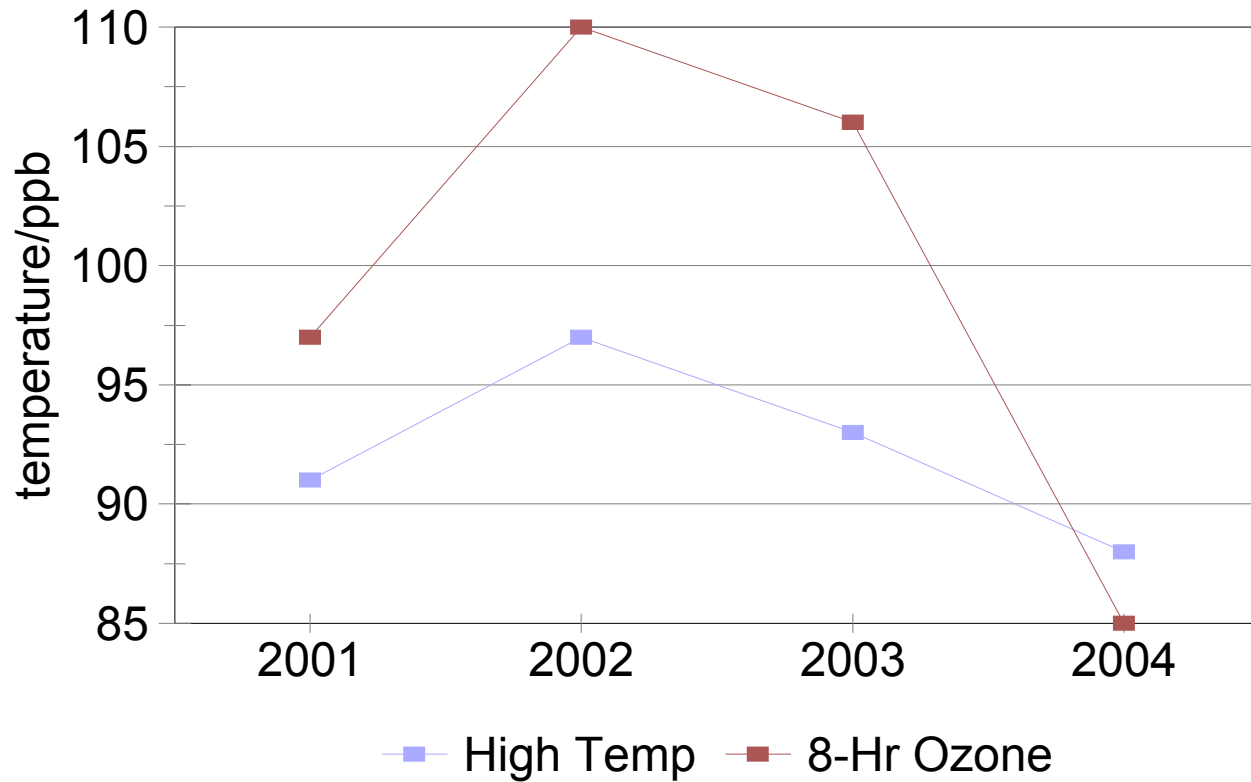
Cory R. Chadwick, Director
Hamilton County
Department of Environmental
Services

High Ozone Values

Hamilton, Butler, Clermont, Warren

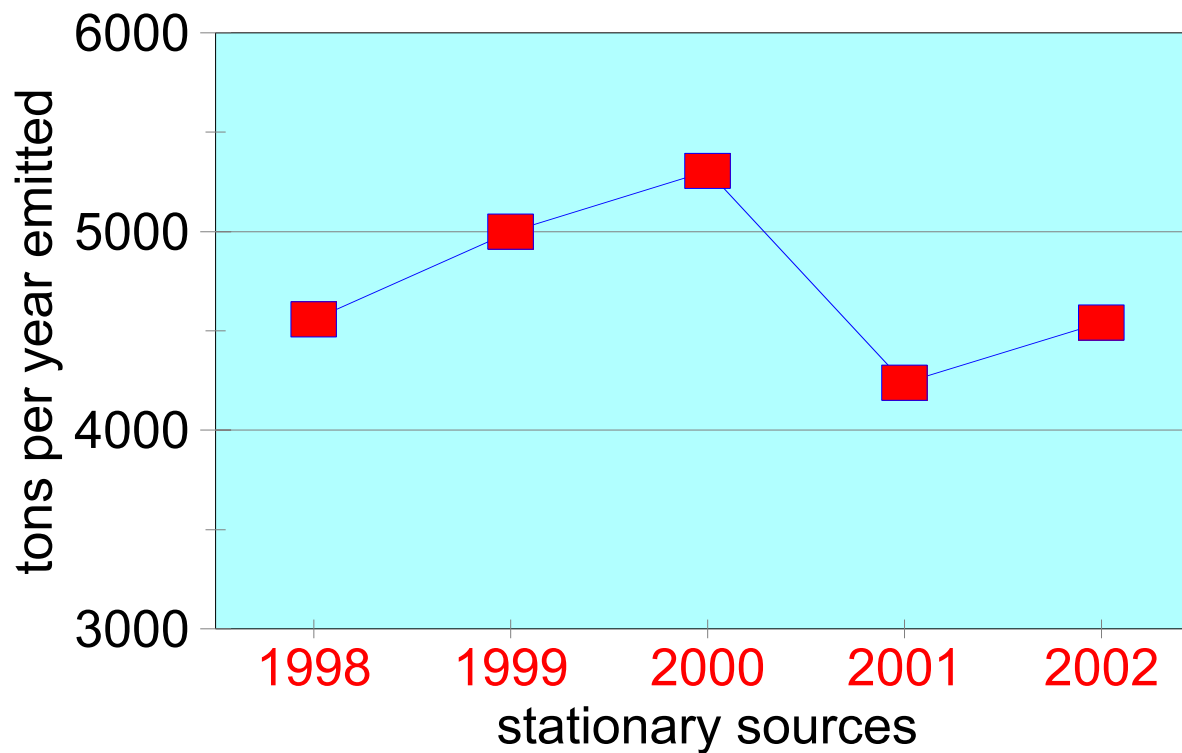


High Temp vs 8-Hr Ozone



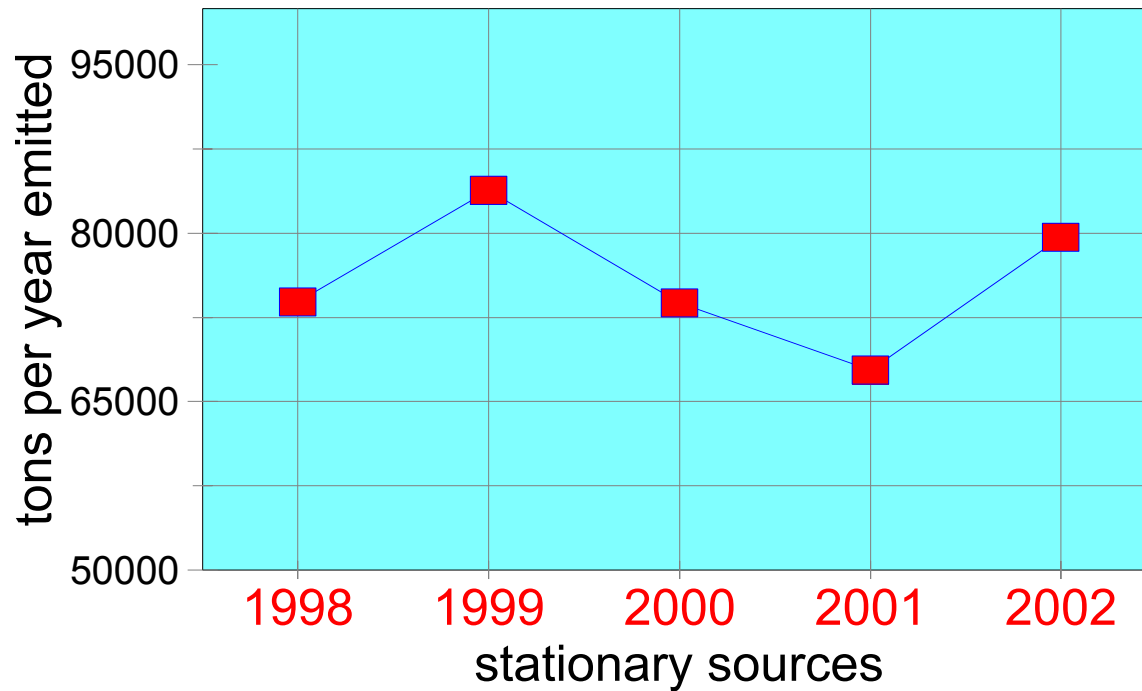
VOC trend

S.W. Ohio emission inventory



NOx trend

S.W. Ohio emission inventory



PM 2.5 Annual Avgs

